

**Server Demo
Applications**

Active Search Engine

Myrosoft

Active Search Engine Demo Application

Demo Guide

MYRASOFT® ACTIVE SEARCH ENGINE®

Demo Guide



© All rights reserved.

Myrasoft S.L. is a registered corporation.

Myrasoft®, the Myrasoft Logo® and Active Search Engine® are Myrasoft registered trademarks.

More product information available at <http://www.myrasoft.com>.

For technical assistance contact us at: techsupport -at- Myrasoft.com



Table of Contents

Introduction	1
CHAPTER 1 USING THE DEMO VERSION	
Running Active Search Engine Demo	2
Check your web server compatibility	3
System requirements	5

Introduction

Active Search Engine demo version allows you to try and experience all Active Search Engine full version features and evaluate this rich web server application designed to easily build and manage a Yahoo style web directory on your web site.

The demo version will allow you to access our search engine demo server and freely test all functions including the user and administration interface. It also includes a free diagnostics utility that you can upload to your server to find out if your server is compatible with Active Search Engine.

In addition to this document, the  Active Search Engine Demo Guide, the demo installation also includes the original  Active Search Engine Application Guide which you may find useful when testing the demo version and allows you to learn everything about this powerful software.

Active Search Engine is a new generation web server application. It actually includes so many features that you will have to acquire so many different applications and not even come close to the power and functionality offered by this complete and exclusive web application. From a targeted directory with just a few links to a fully automated search engine able to manage millions of links, Active Search Engine is probably the solution you were looking for. So give it a try now and find out by yourself.



Using the demo version

Running Active Search Engine Demo

Active Search Engine has two main modules: the **Directory User Interface** (the directory itself, what your search engine visitors will see and interact with) and the **Administration Interface** (a powerful software that allows the search engine administrator to manage the configuration of the search engine, its look and feel, the approval of listings and votes, sending newsletters and so on).

After installing the demo version just click on the icons located on your desktop to access each module. Active Search Engine Demo will take you to our demo server user interface where you can test all user functions. Active Search Engine Admin Demo will allow you to enter the directory administration interface like if you were the search engine administrator (enter **admin** for Login Name and leave the Password field blank).

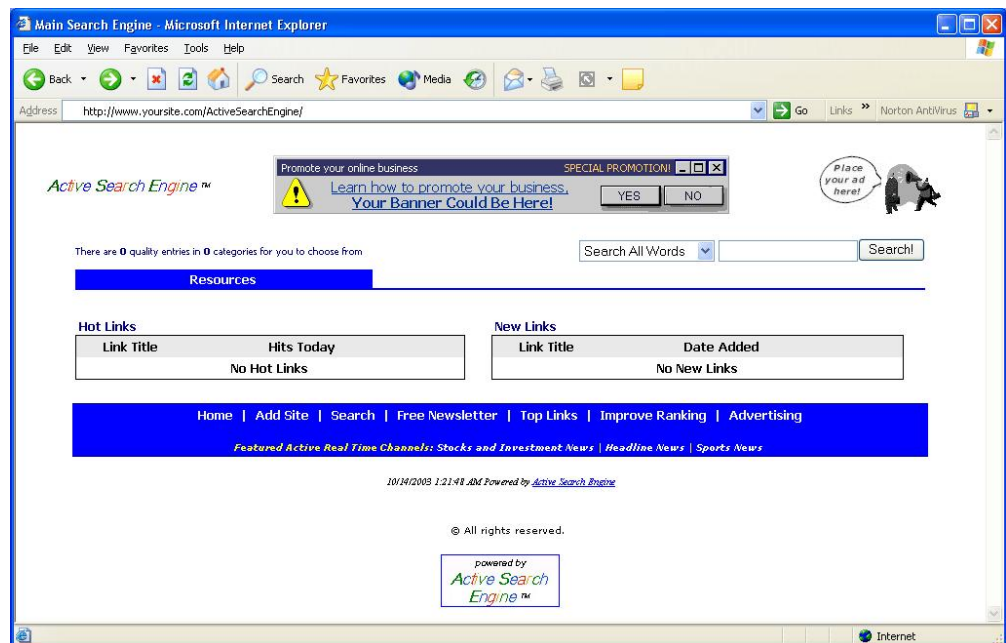


FIGURE 1.1 Active Search Engine User Interface. Home Page.

USING THE DEMO VERSION

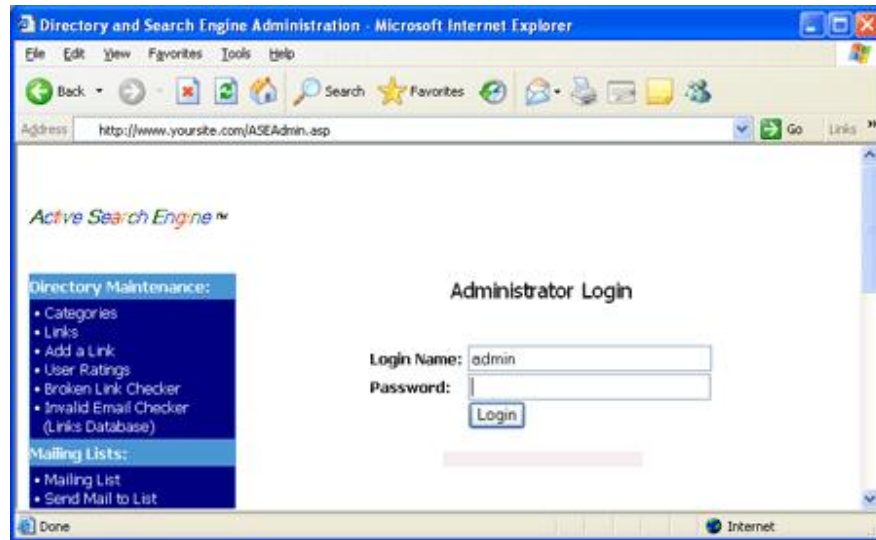





FIGURE 1.2 Entering Active Search Engine Administrator Interface.

You can also access this demo manual  Active Search Engine Demo Guide and the full  Active Search Engine Application Guide by clicking on windows  Start Menu / All Programs / Active Search Engine Demo. All documentation is also accessible at our website.


Check your web server compatibility

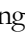
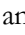

When you download the demo version it includes a free Myrasoft web utility called ASEDiag. This utility when uploaded to your web server checks the modules that your hosting provider has installed on your server and determines if your server is ready to run Active Search Engine or if some basic component needs to be previously installed.

Note that Active Search Engine requirements are very basic and most hosting providers should have the required components already installed for any Windows based hosting account.



About required components

Basically your server just needs a component able to send email, the Microsoft File System Component and the Microsoft Data Access (ADO) component to be able to access databases. Most ISPs if not all have these basic components installed. Check the  System Requirements section below for details.

You can find out if your web server is ready to run Active Search Engine by just uploading and running the file  ASEDiag.asp (installed in  C:\Program Files\Active Search Engine Demo directory by the demo version, or in  C:\Program Files\Active Search Engine by the full version). To do so use your

USING THE DEMO VERSION

favorite FTP program like WS-FTP, FrontPage or any other and upload the file to any directory in your web site:

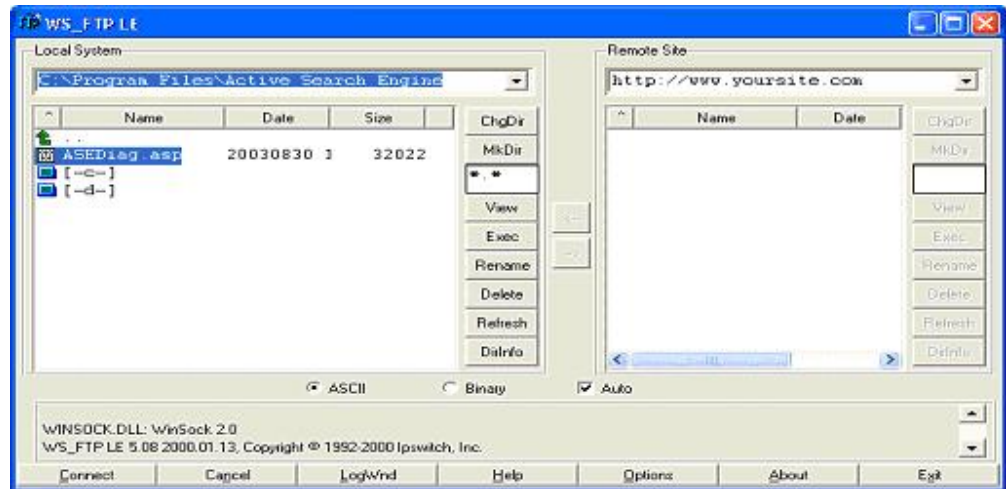


FIGURE 1.3 Uploading the ASEDiag utility to check your server compatibility

Then open your web browser and type <http://www.yoursite.com/ASEDiag.asp> (where yoursite.com is your domain name). You will see something like this:

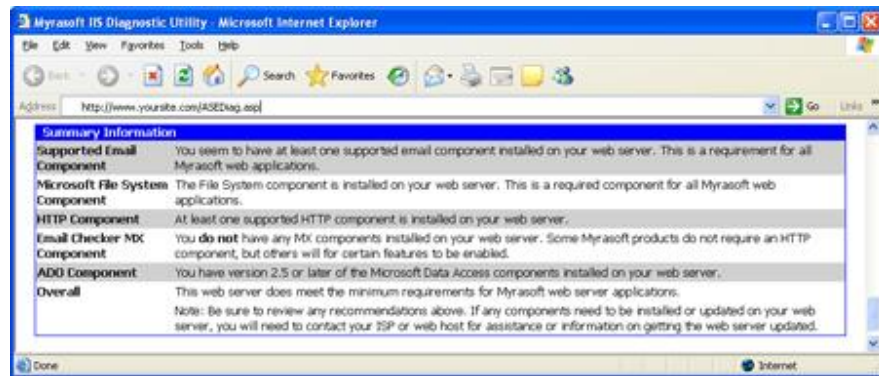



FIGURE 1.4 Running the ASEDiag utility on your server

The ASEDiag.asp utility will list the components your hosting provided has installed and are ready for use on your web server. Note that not all listed components are needed by Active Search Engine but are listed for your information. If you look at the Summary Information section as outlined on the picture above the program will tell you if all the components needed are correctly installed. If everything is ok you can proceed and install Active Search Engine full version on your server, otherwise you will need to contact your hosting provider and let them know the component that needs to be installed. Look at the System Requirements section below for a detailed component list.


System Requirements

Active Search Engine has the following system requirements on your web server hosting account:



 **System:** Web Server capable of running Microsoft IIS 4.0 or better (recommended OS: Windows 2000 Server or Windows 2003 Server)

 **Database** Microsoft Data Access (ADO) 2.5 or better and

**(For the SQL version only):* Microsoft SQL Server 7.0, SQL Server 2000 or better



 **Email Component** Needed to send emails and newsletters. Choose between any one of

- Microsoft CDO (included with all Windows servers)
- ASPEmail
- ASPMail
- ASPQMail
- JMail
- or SmartMail

 **HTTP component**  **Optional.**

Needed to check broken links and non existent url addresses. Choose between any one of

- Microsoft XMLHTTP (included with all Windows servers)
- Microsoft Server XMLHTTP
- AspHTTP
- IP*Works! HTTP

 **Email MX component**  **Optional.**



Needed to check invalid emails. Choose between any one of

USING THE DEMO VERSION

- Microsoft Nslookup (included with all Windows servers)
- AspMX
- IP*Works MX



About optional required components

Note that the last two components, the  HTTP component and the  Email MX component are optional and Active Search Engine will function correctly without them. They are used for the Broken Link Checker and the Valid Email Checker modules so if your server does not have one of these modules installed those features will be disabled in Active Search Engine but the application will function correctly with all other features enabled.

U S I N G T H E D E M O V E R S I O N

For any questions regarding the demo version or system requirements please feel free to contact us at: techsupport –at- myrasoft.com .



© All rights reserved.

Myrasoft S.L. is a registered corporation.

Myrasoft® , the Myrasoft Logo® and Active Search Engine® are Myrasoft registered trademarks.

More product information available at <http://www.myrasoft.com>